





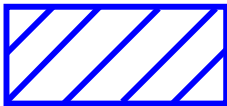
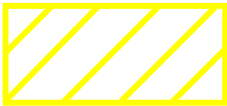


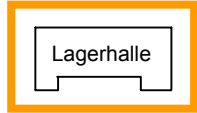



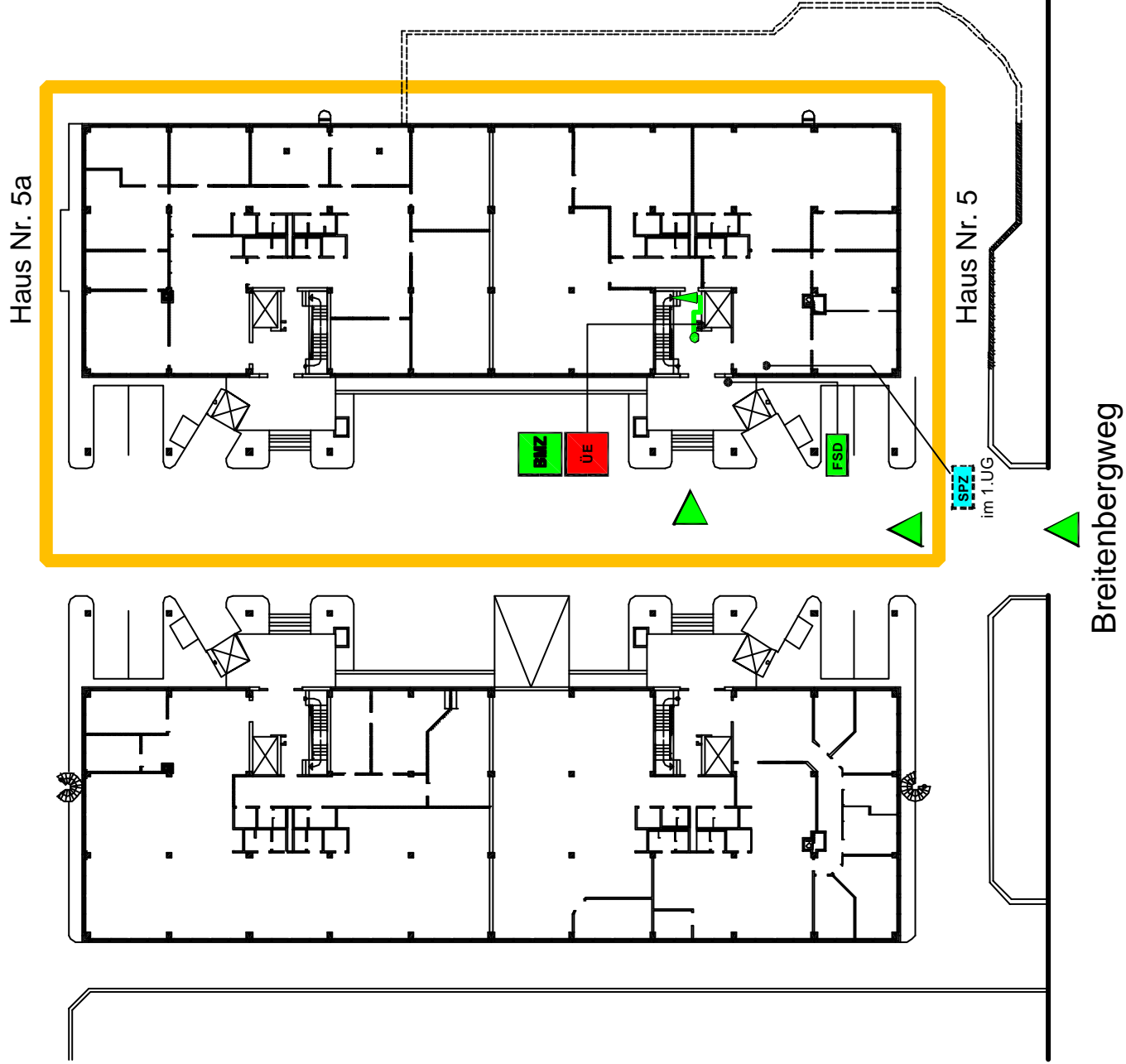
# **Laufkartenmuster**

# Symbole mit Farbgebung in Laufkarten

1.  **Übertragungseinrichtung**
2.  **Brandmeldezentrale**  
(mit Feuerwehrbedienfeld)
3.  **Feuerwehr-Schlüsseldepot**
4.  **Sprinklerzentrale**
5.  **Nichtautomatische Melder**  
(Handfeuermelder = HFM)
6.  **Automatische Melder**  
(z.B. Rauchmelder)
7.  Der **Wirkbereich** einer selbsttätigen/automatischen bzw. vorgesteuerten Löschanlage  
(Sprinkler – CO<sub>2</sub> – Inergen)
8.  **Überwachungsfläche** für lineare Brandmelder  
(Sensorkabel oder RAS-System)
9.  **Anfahrt / Eingang**
10.  **Einsatzweg** vom Standort ausgehend
11.  **Orangefarbige Umrandung** eines Bauabschnittes in dem sich der Auslösebereich einer Gruppe befindet  
(z.B. Lagerhalle)
12.  **Standort** eines Brandmelder-Tableaus

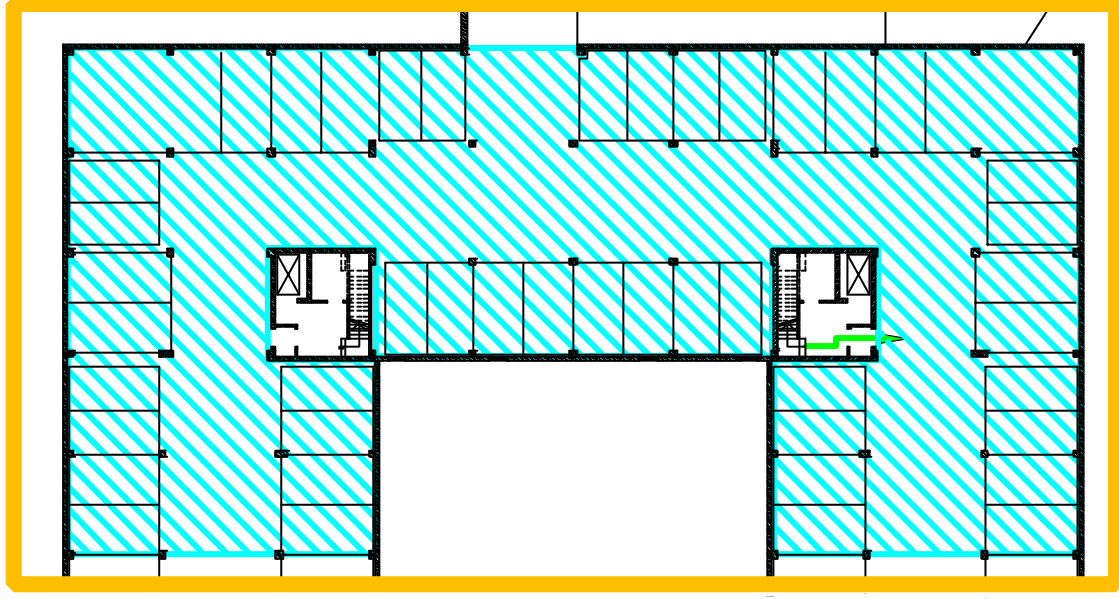
Meldergruppe 1  
Sprinklergruppe 1  
Tiefgarage  
2.UG

EG

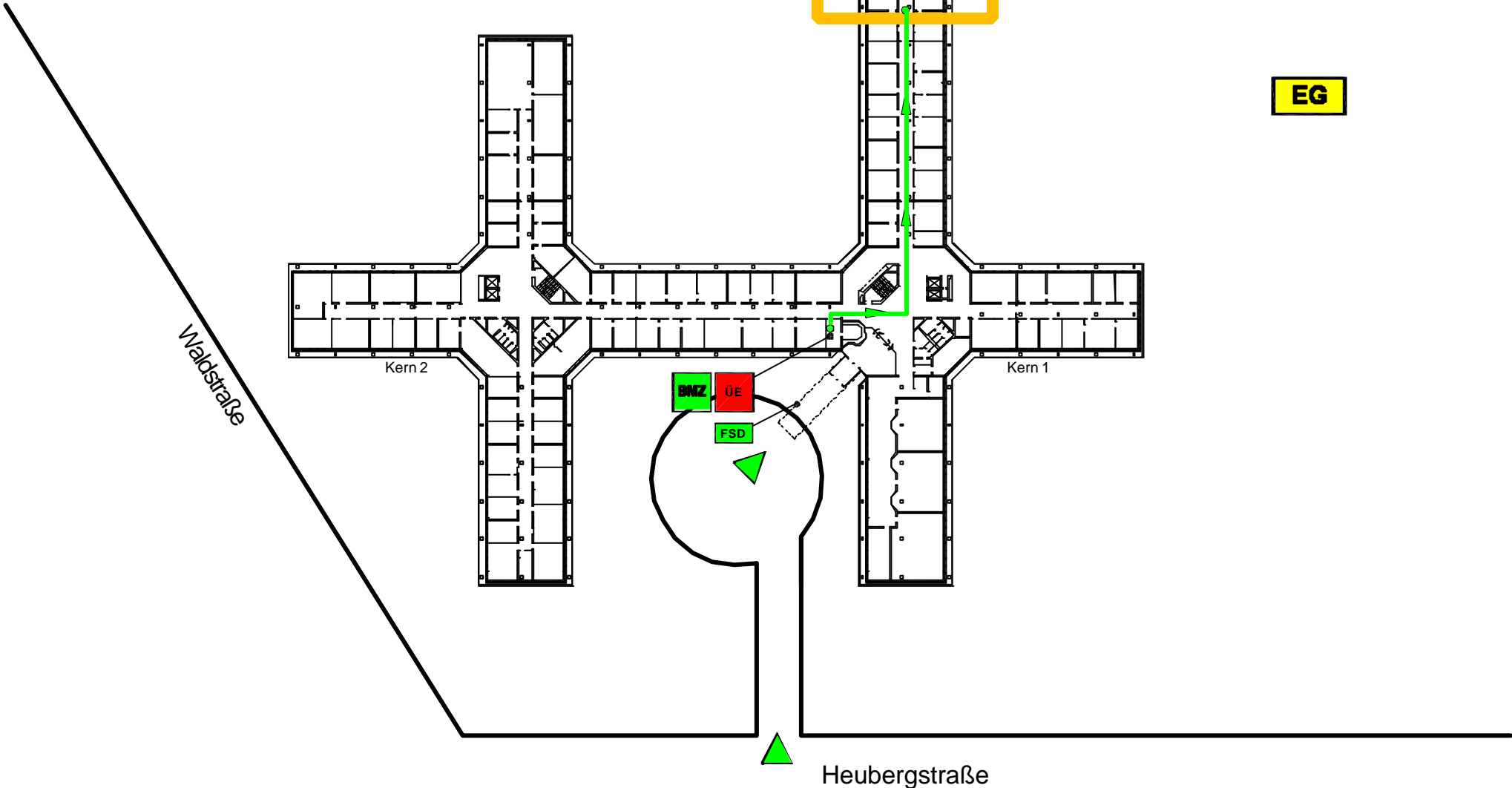


Meldergruppe 1  
Sprinklergruppe 1  
Tiefgarage  
2.UG

2.UG

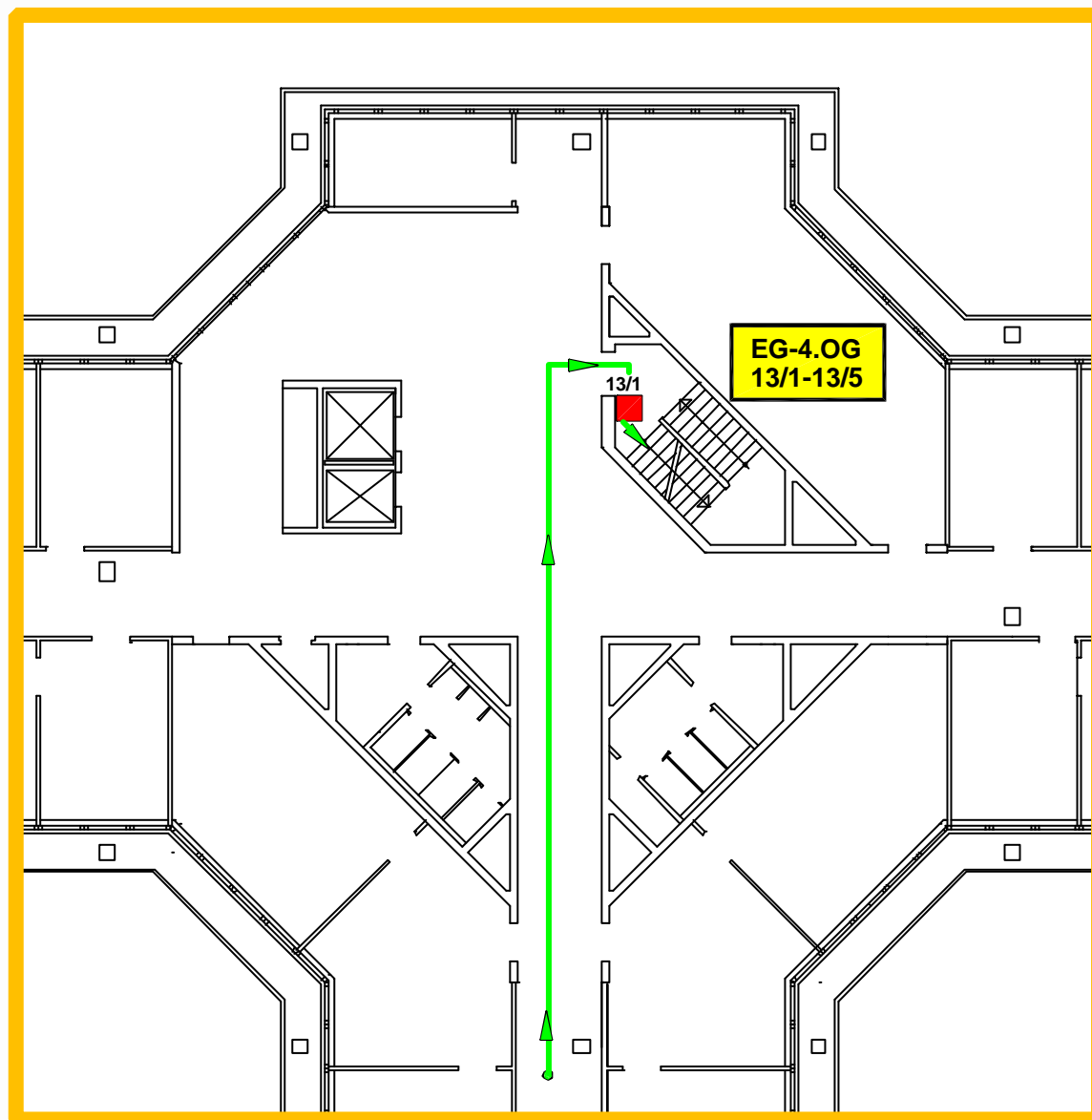


Meldergruppe 13  
5 Handfeuermelder  
Kern 3  
Treppenhaus  
EG-4.OG

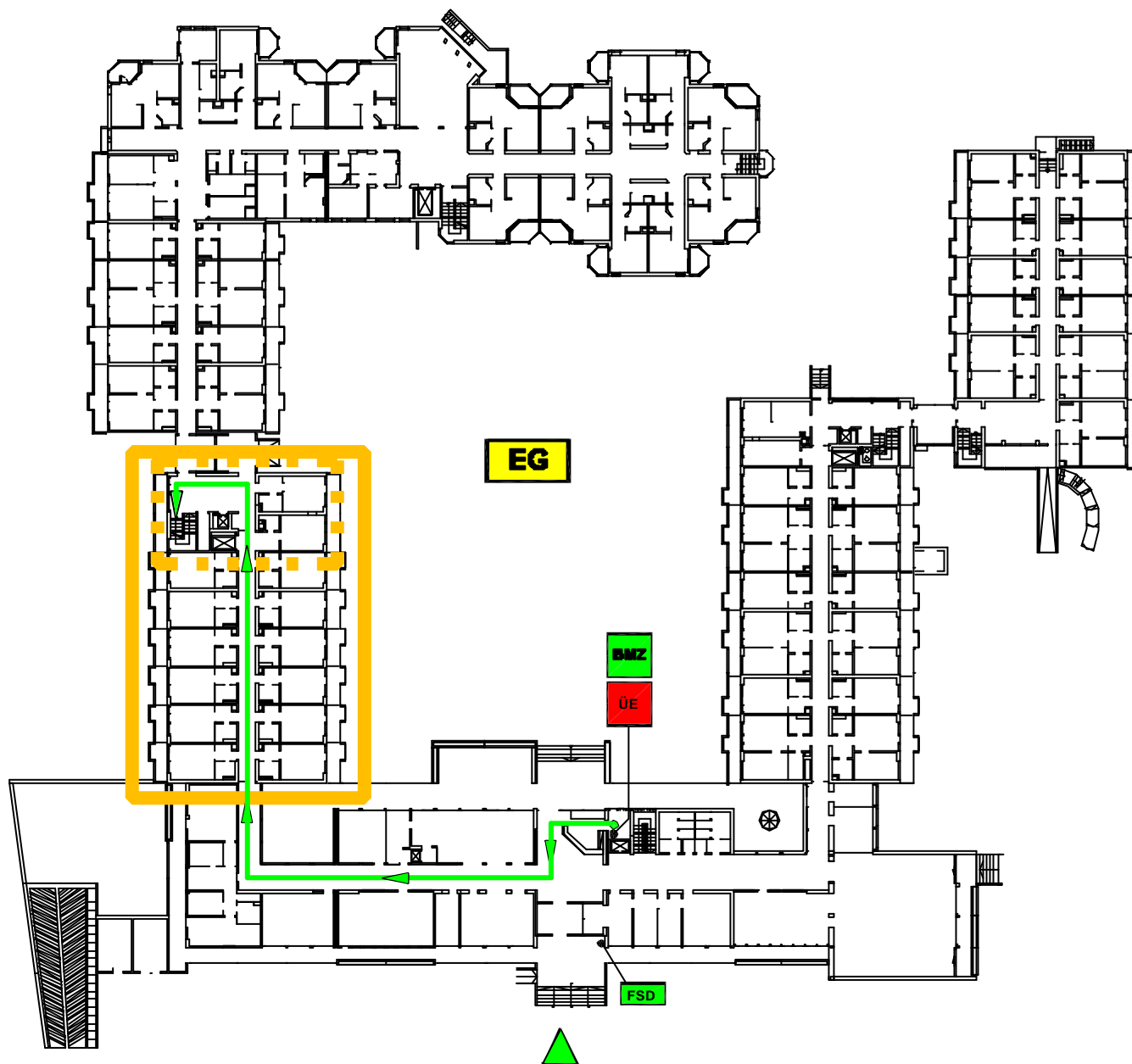


Meldergruppe 13  
5 Handfeuermelder  
Kern 3  
Treppenhaus  
EG-4.OG

EG

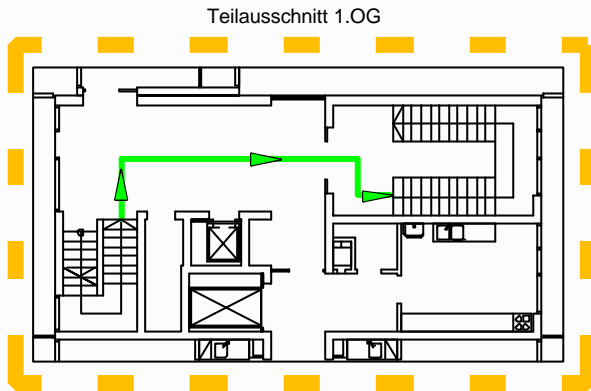


Meldergruppe 14  
2 Handfeuermelder  
Haus D  
Flur  
2.OG

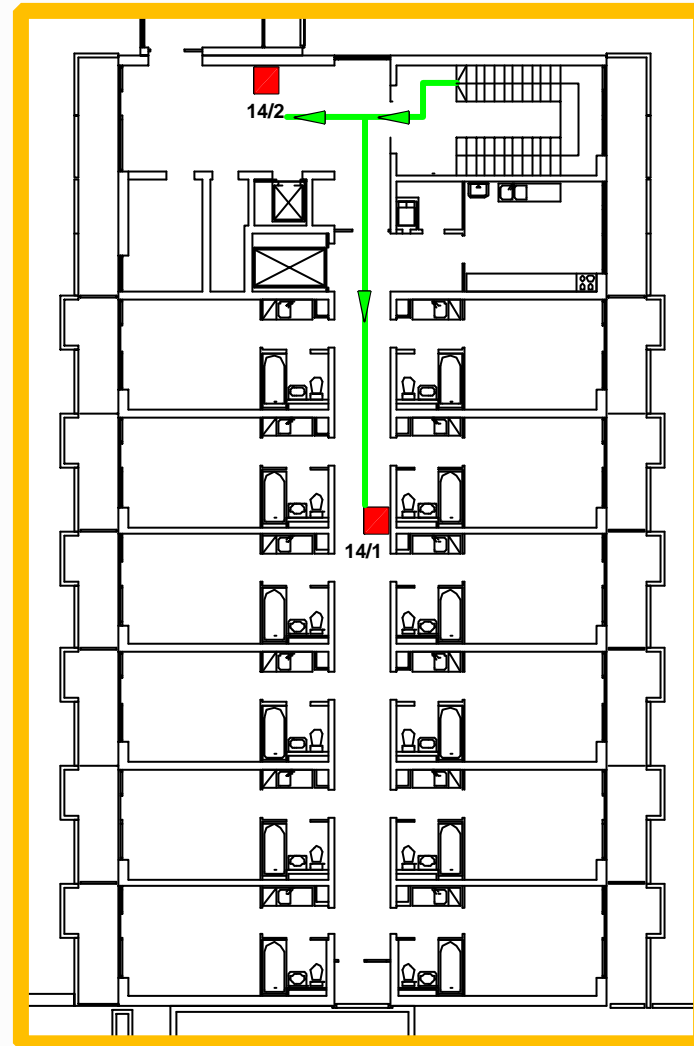


Wittelsbacher Straße

Meldergruppe 14  
2 Handfeuermelder  
Haus D  
Flur  
2.OG



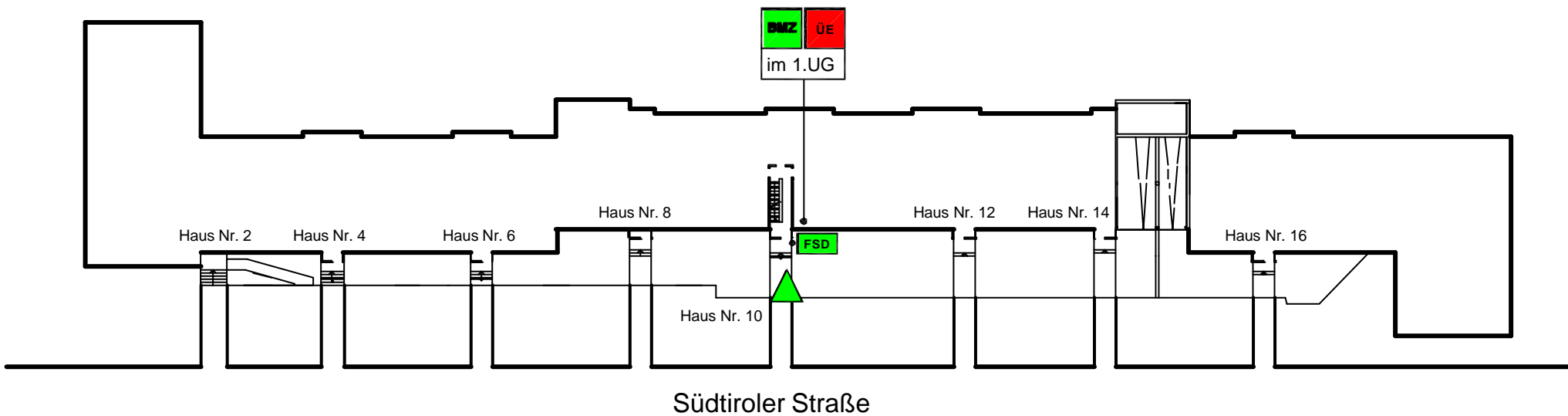
2.OG





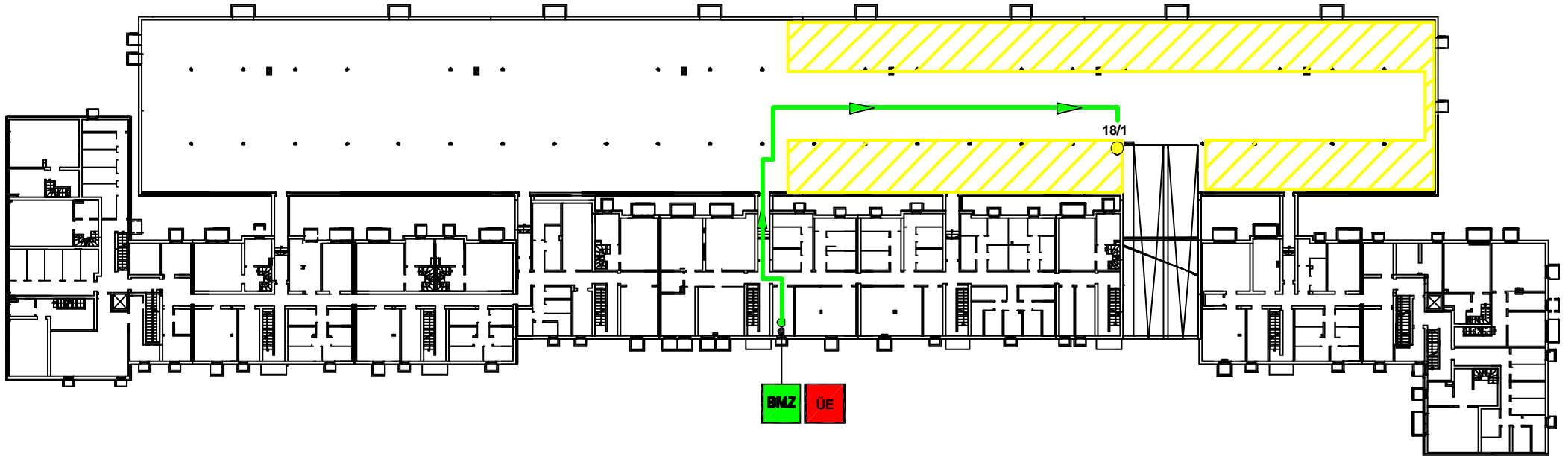
Meldergruppe 18  
1 autom. Melder  
Sensorkabel  
Tiefgarage  
1.UG

EG

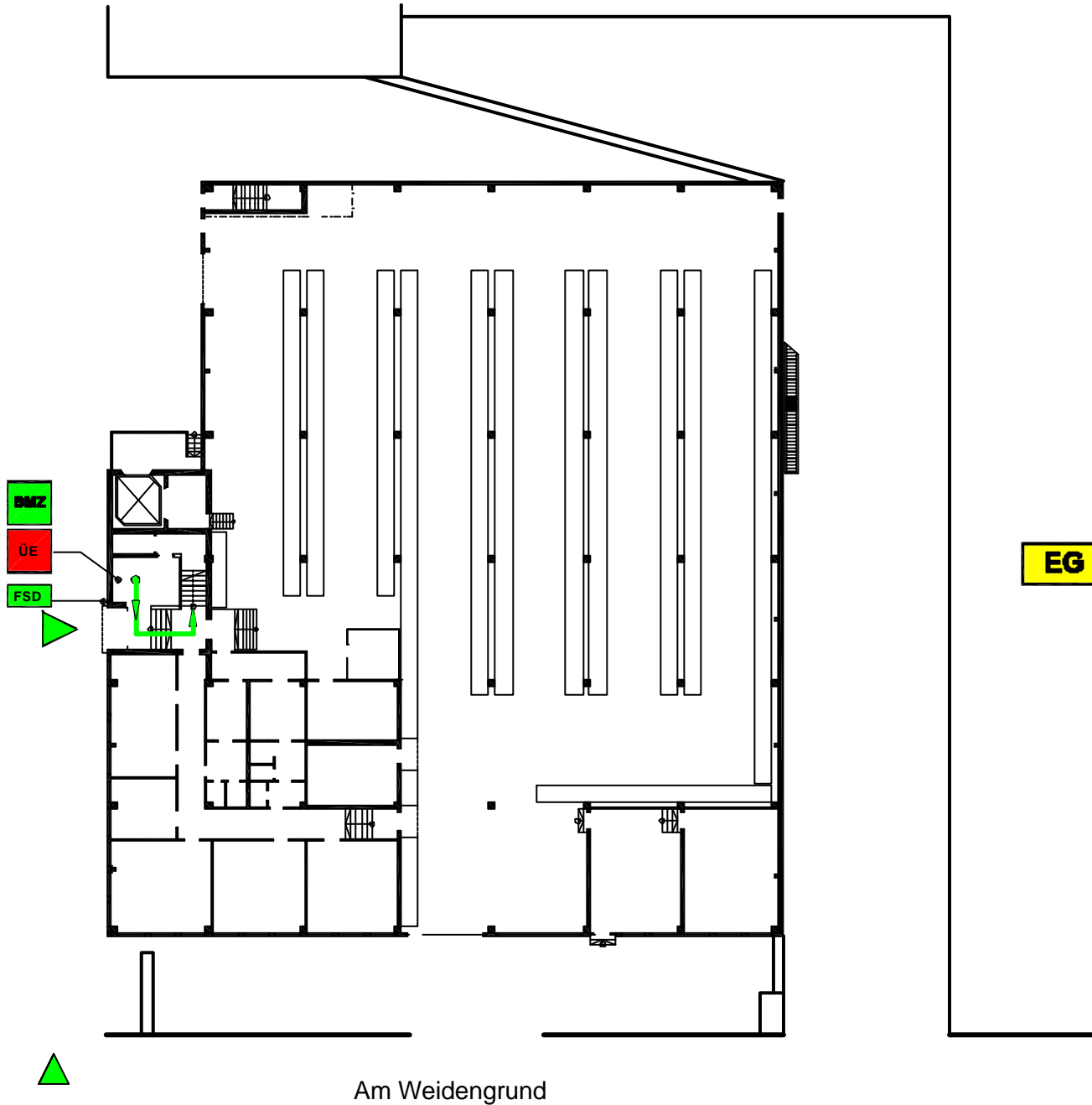


Meldergruppe 18  
1 autom. Melder  
Sensorkabel  
Tiefgarage  
1.UG

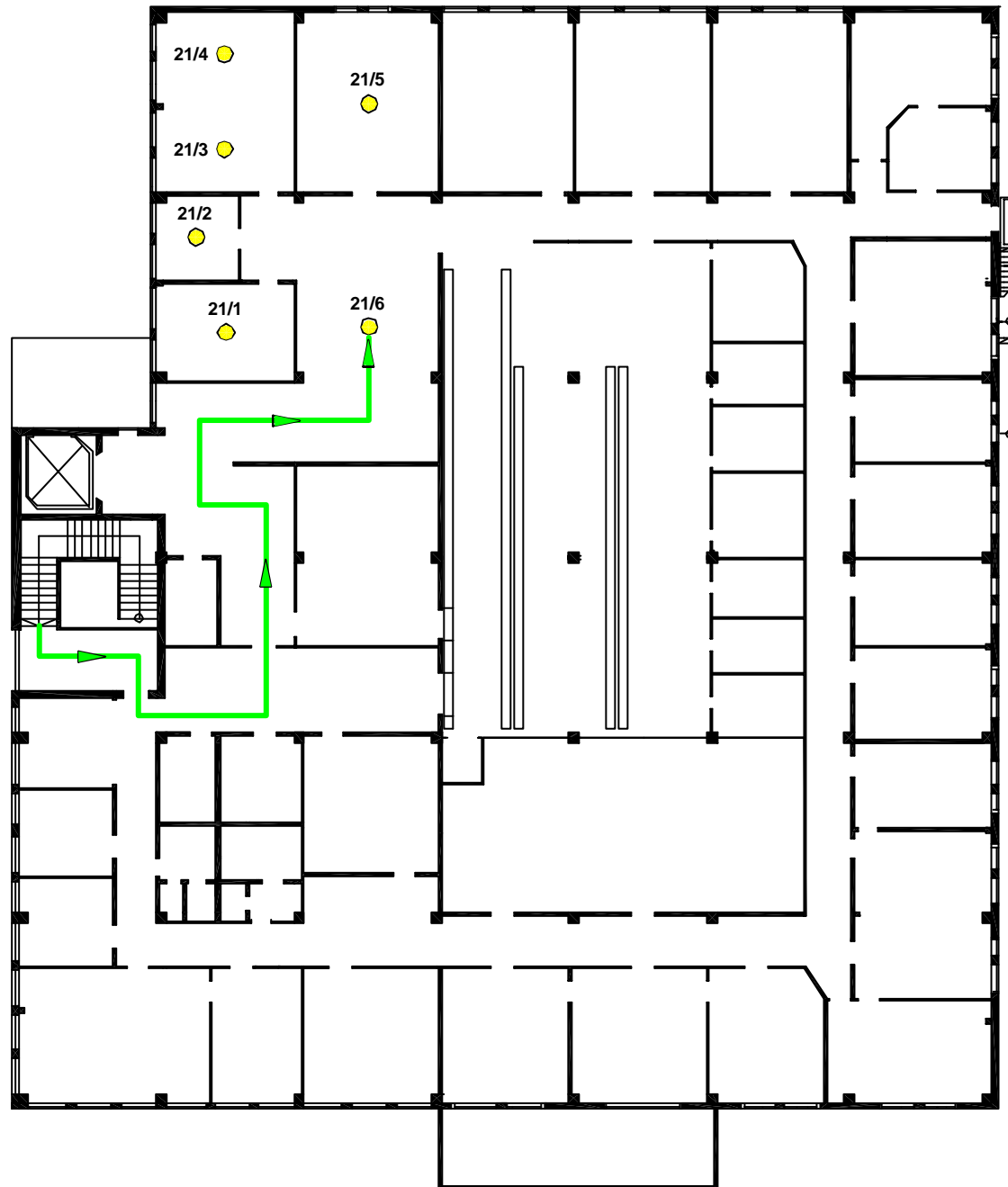
1.UG



Meldergruppe 21  
6 autom. Melder  
Büro/Küche/Flur  
1.OG



Meldergruppe 21  
6 autom. Melder  
Büro/Küche/Flur  
1.OG



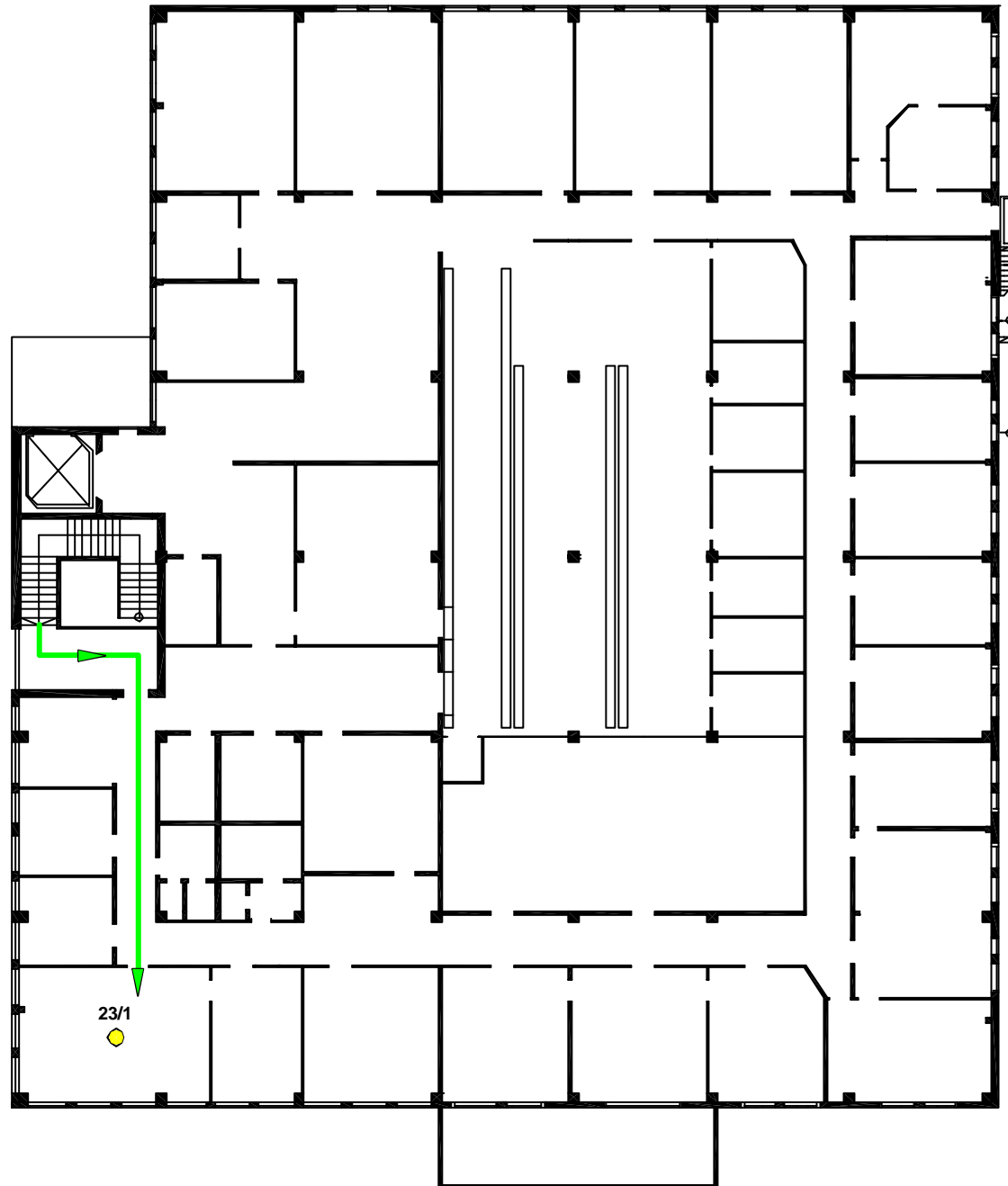
1.OG

Meldergruppe 23  
1 autom. Melder  
Lacklager  
1.OG



Musterstrasse

Meldergruppe 23  
1 autom. Melder  
Lacklager  
1.OG

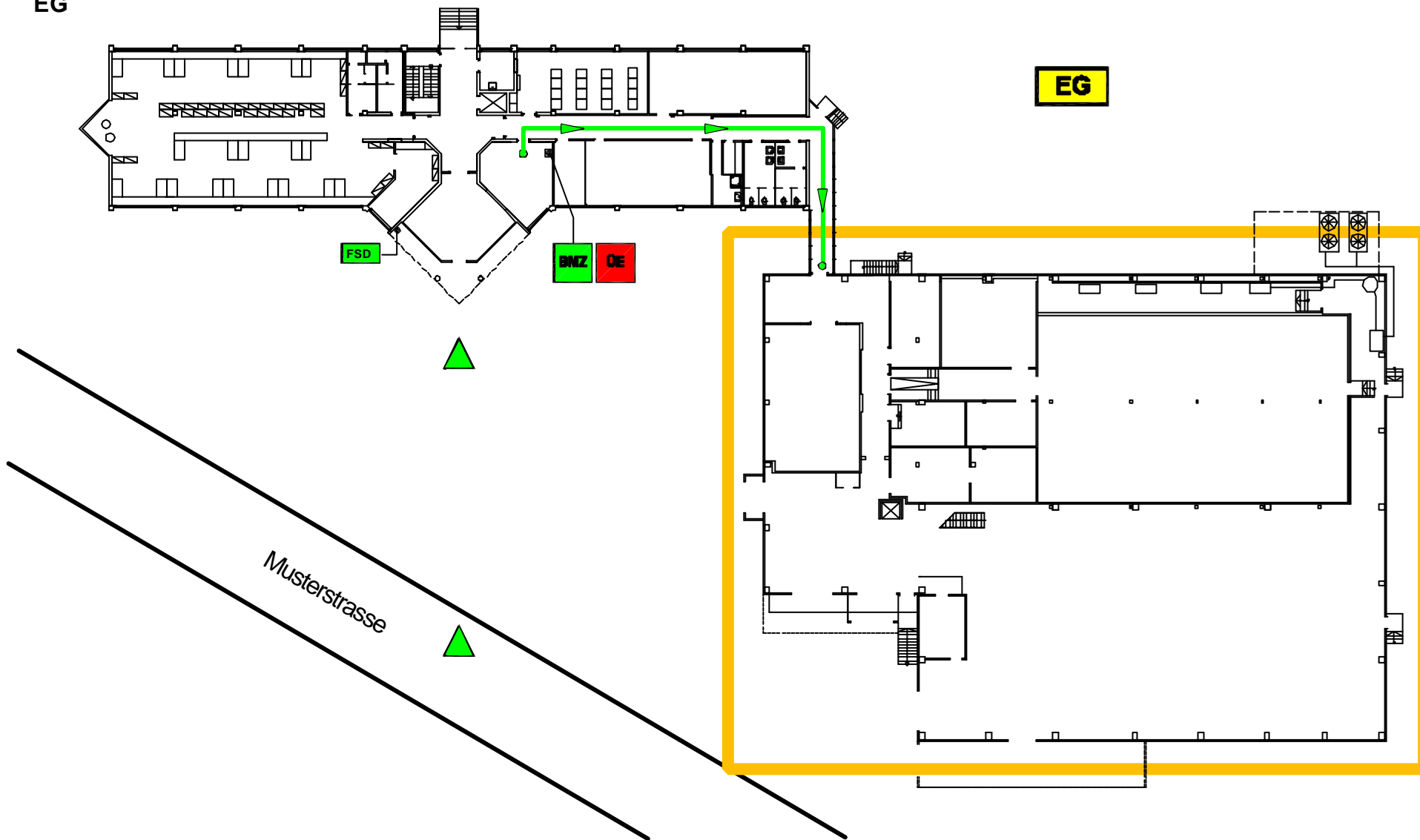


1.OG

EX - Bereich

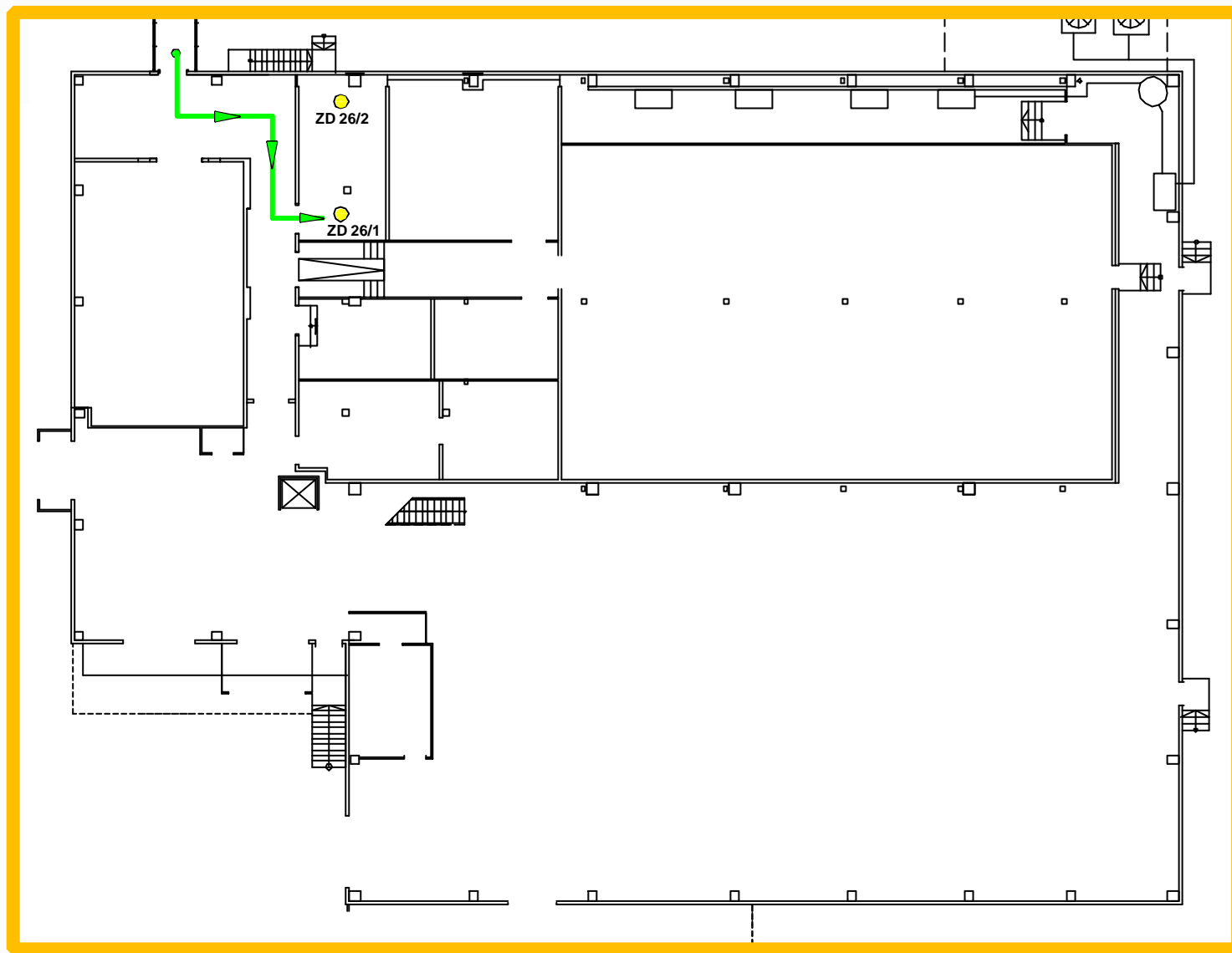
23/1

Meldergruppe 26  
2 autom. Melder  
Zwischendecke  
Lagerhalle  
EDV-Raum  
EG



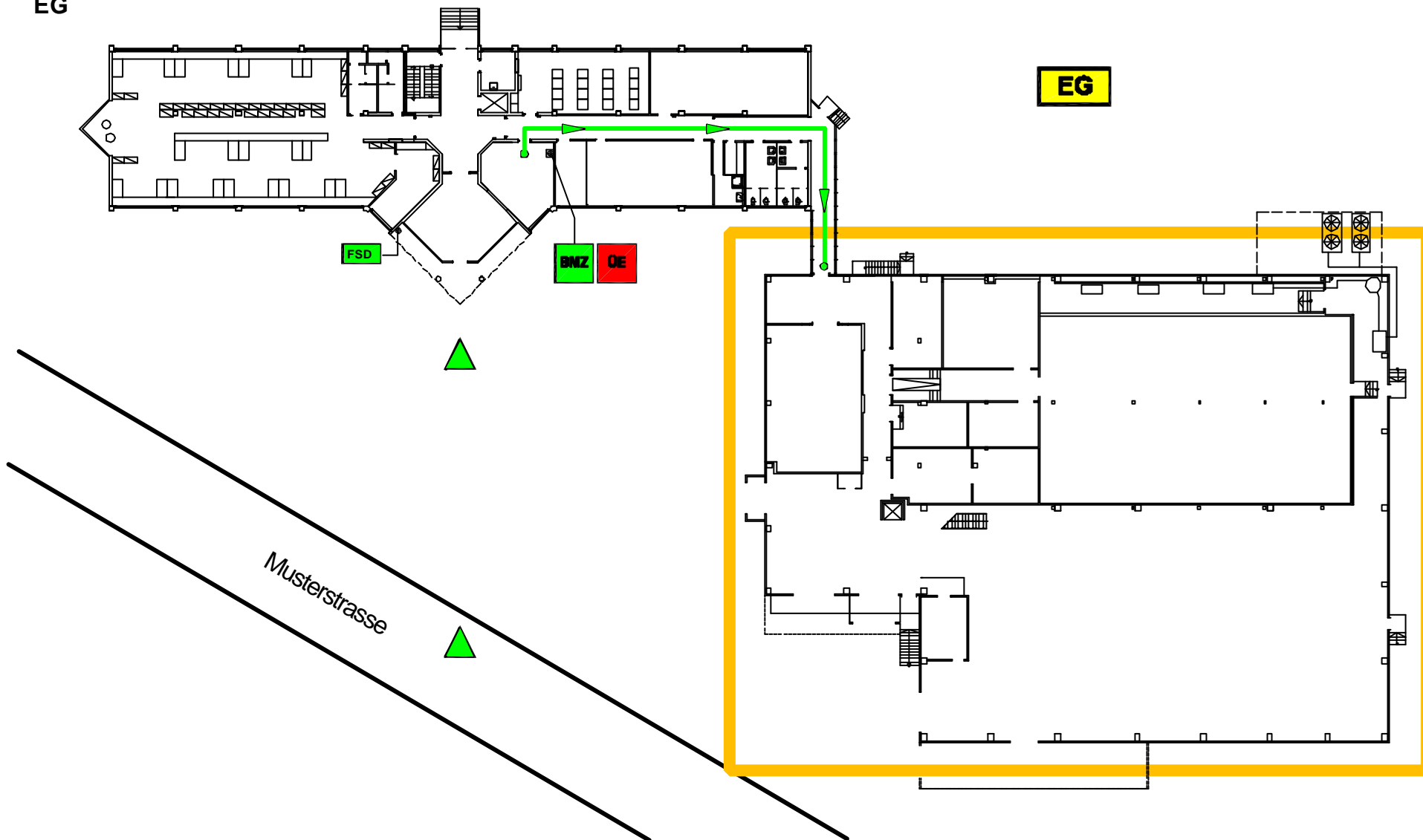
Meldergruppe 26  
2 autom. Melder  
Zwischendecke  
Lagerhalle  
EDV-Raum  
EG

**EG**



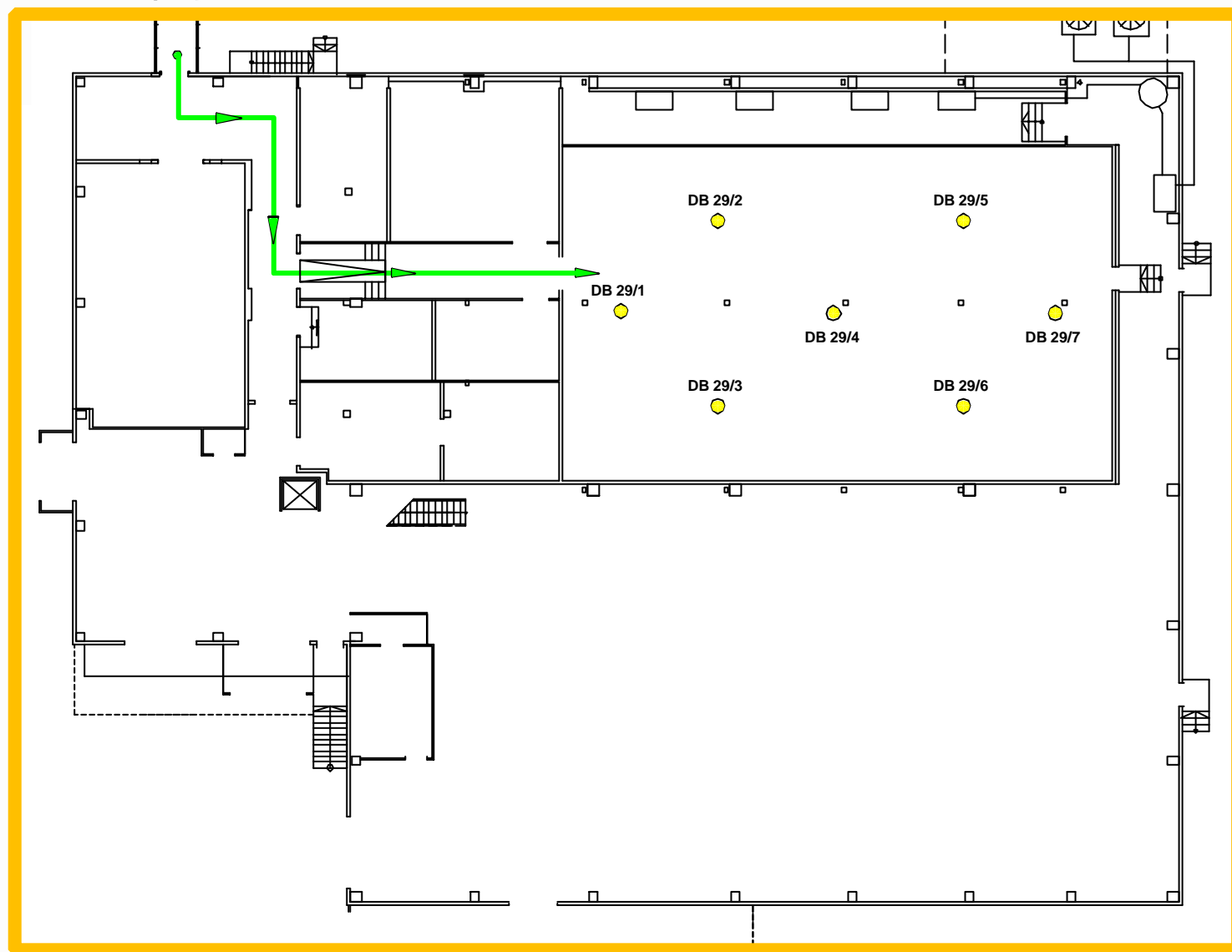


Meldergruppe 29  
7 autom. Melder  
Doppelboden  
Lagerhalle  
EDV-Raum  
EG



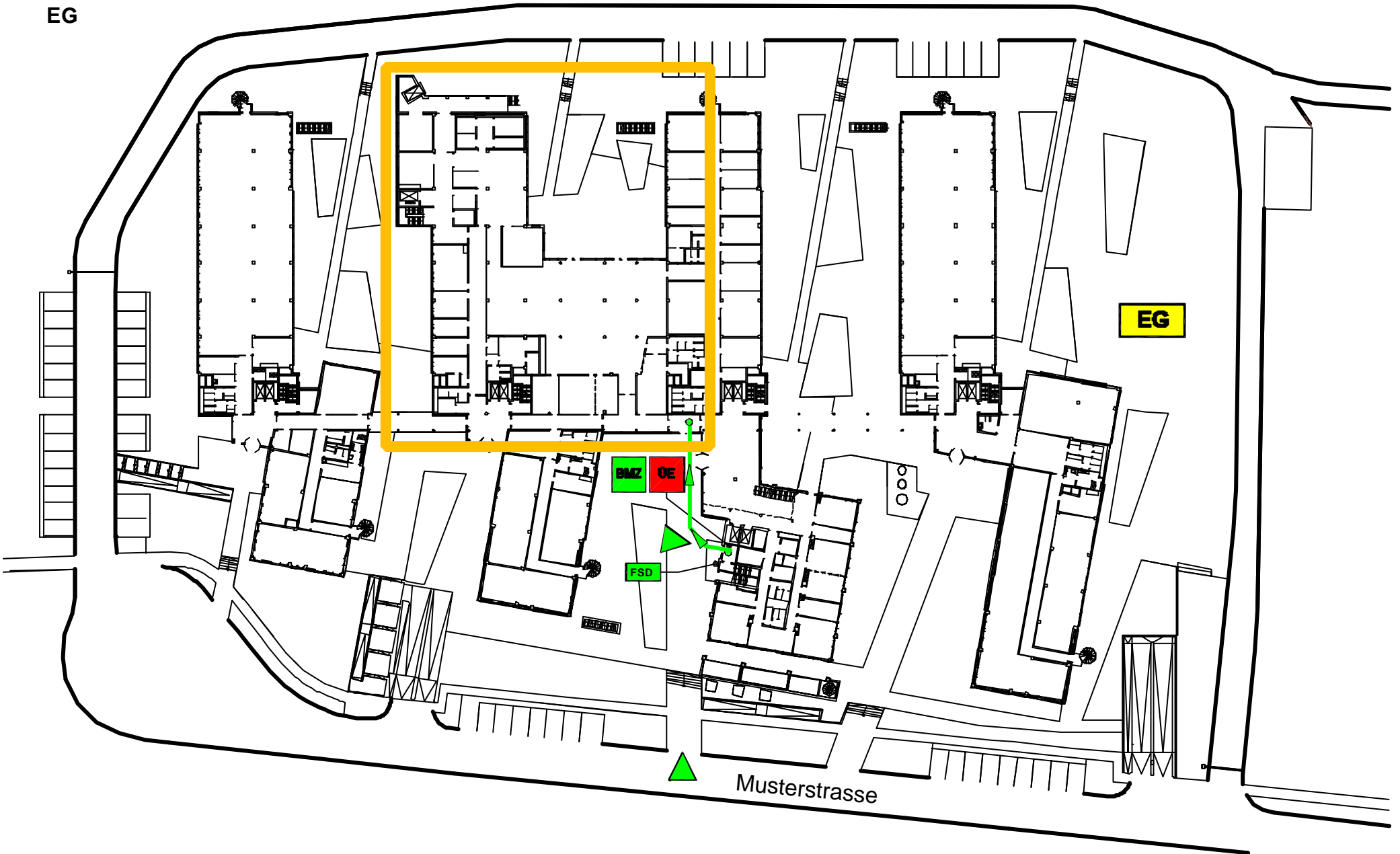
Meldergruppe 29  
7 autom. Melder  
Doppelboden  
Lagerhalle  
EDV-Raum  
EG

EG



# BMZ-STANDORT

BMZ-Standort  
Haus B/C  
EG



BMZ-Standort  
Haus B/C  
EG

EG

